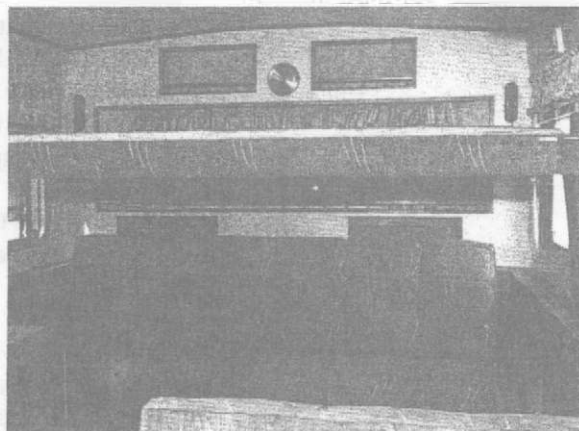
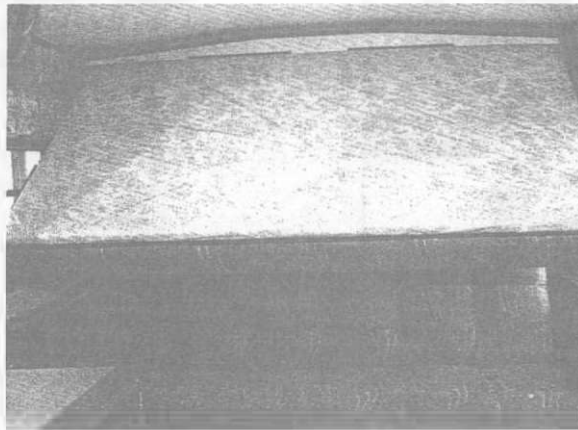


9. INTERIOR FURNISHINGS

9.1 Swing Away Bunk

To convert swing away bunk into bed:

1. Remove safety hooks from ceiling brackets.
2. Release ceiling bracket latches while holding bunk.
3. While holding bunk let the side facing you drop straight down pivoting at the wall, then pull towards you and let bunk rest on its cables. The opposite side of the bunk will swing back to rest against walls.
4. Pull bunk legs down on each side of bunk and insert pins on ends of legs into holes on the top sides of the bottom section. Note: Do not attempt to use bunk without legs in bed position.
5. To convert bunk into original state, reset bunk legs, let bunk rest on its own cables.
6. Pull bunk back and at the same time push bunk down, this should let the rear of bunk rest on top of wall brackets.
7. Push up bunk into ceiling bracket until latched. Reinsert safety hooks.



10. APPLIANCE OPERATION AND CARE

10.1 3-Way/Electric Refrigerator

Your TowLite is equipped with a 3-way refrigerator and there is an instruction booklet inside trailer. We recommend you read and follow the instructions for most efficient operation of this unit.

Before starting on a trip, plug in your coach utility cord at your home about six hours before leaving. Switch the refrigerator to 110V. This will insure that the refrigerator is cold before you start your journey. Be sure the trailer is in the raised position. **Do not operate refrigerator over one hour while trailer is in lowered position unless the vehicle is in motion.** On the highway switch to low volts until you get to your destination. When you arrive, switch to LP Gas or 110V. Note: If the refrigerator voltage selector is accidentally left on 12V, it will result in a discharged battery.

10.2 Range

If your TowLite includes a range unit, you will find an operating guide book in your owner's kit. Be sure to read it carefully and follow directions step by step. Note: Be sure the pilot is off during transit.

10.3 Automatic Gas Hot Water Heater

Units equipped with a LP-Gas fueled hot water heater will include an instruction manual in the owner's kit. This unit should also be turned off while in transit or whenever the trailer is in the lowered position. Note: An additional plate concerning the TowLite units gas piping is located on the front of the trailer adjacent to the mounting for the gas bottles. For your reference it is reproduced here.

10.4 Furnace

Your TowLite is equipped with forced air furnace which operates on LP-Gas. It is equipped with a sealed combustion chamber and has an automatic ignition system that is designed for safety and efficiency. You will find an operating manual in your owner's kit. Be sure to read it carefully and follow its instructions. Also be sure the gas is shut off during transit. The furnace requires 12 volt DC current to operate blower and automatic ignition. If the furnace is operating in absence of 115 volt power source it will discharge 12 volt storage battery.

Note: To operate furnace the on/off switch under the thermostat should be on. Switch should be in the off position when furnace is not in use.

**THIS GAS PIPING SYSTEM IS DESIGNED
FOR USE OF
LIQUEFIED PETROLEUM GAS ONLY.
DO NOT CONNECT NATURAL GAS
TO THIS SYSTEM.**

Securely cap inlet(s) when not connected for use. After turning on gas, except after normal container replacement, test gas piping and connections to appliances for leakage with soapy water or bubble solution. Do not use products that contain ammonia or chlorine.

1 1. MAINTENANCE

11.1 Electric Brakes

Electric brakes need no special care or service other than keeping connections and wiring free of dirt and other foreign matter. Brake adjustment, relining, and repair are similar to those on your car. Any qualified service station can do the job. Caution: Do not pull breakaway pin for parking brake, as this will result in a constant drain on the battery and run it down.

11.2 Wheel Bearing Lubrication

Repack the wheel bearings with a good grade of grease every 6,000 miles or before any major trip. Check tightness of wheel lugs every 1,000 miles.

11.3 Tires Inspection

Your TowLite trailer is equipped with first line quality tires which are designed to provide many miles of service.

Inspect all tires for wear and damage. If general tread wear indicates $1/16"$ (1.6mm) between any two adjacent tread ribs, the tires should be replaced. Look for abnormal wear patterns such as cupping or feathering of the tread or rapid wear on either the inside or outside of the tread surface. Replace the tire if cuts, bulges, peeling tread or other signs of damage or failure are evident. Remove stones and other objects lodged in tread.

Maintain proper pressure. The most common cause of tire failure is improper inflation. Keep an accurate tire gauge in your tool kit. Check tire pressure cold. A cold tire is one that has been run less than 1 mile 1.6km. Note: Do not bleed air out of warm tires.

11.4 Exterior Care

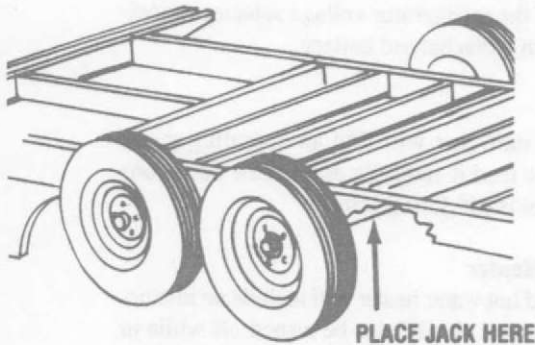
Almost the entire outside surface of your TowLite consists of prefinished fiberglass that will keep its finish indefinitely, if given the proper care. Mild soap and water will help retain the natural gloss. Clean top section first in lowered position, then raise and clean the bottom section.

Abrasive cleaners should not be used on the fiberglass.

The warranty requires that the owner perform minimum maintenance which includes washing and waxing the R.V. siding at least 3 times a year at regular intervals. Check caulking around all windows, vents and roof seam. If caulking is cracked and dried out. Clean and replace.

11.5 Interior Care

Counter top and tables—The hard finish surfaces of your counter tops and tables are the same as those in your kitchen at home. While being highly resistant to heat, staining, and abrasion, the same good care will keep them like new for years to come. Simply wipe clean with warm soap and water. **Wall paneling**—The paneling and ceiling of your TowLite trailer may be of several finishes and textures. Never use detergents or abrasive cleaners on walls or ceilings. Most surfaces will clean with a soft cloth which has been dampened with furniture polish or wax; avoid the use of large amount of water. Check for any water leaks.



Changing A Tire

Place a scissor jack under the frame (on frame only) adjacent to the wheel that is to be removed.

Drapes—Hand wash, line dry

Floors—Same as your kitchen floor at home. Waxing before extended trip will make floor care easier enroute. A rubber or fiber mat placed outside the door will do wonders in keeping sand and dirt outside. For units equipped with carpet, use mild soap and water to clean soiled spots and a regular vacuum cleaner to pick up sand and dirt.

Appliances—Same as your appliances at home.

11.6 Hitch Inspection and Lubrication

Periodically inspect your ball and hitch assembly for cracked welds and metal fitting. Also check for loose nuts and bolts.

Occasionally lubricate the hitch ball with universal bearing grease, or hitch ball lubricant.

11.7 Battery

Add water and recharge if needed. Disconnect cables, remove battery and store in a cool, dry place. Check monthly and recharge as needed.

11.8 Hydraulic Cylinder

Periodically check your hydraulic cylinder for leaks. If EXCESSIVE leaking occurs take your trailer to your dealer for repairs. Keep the cylinder support shaft well grease.

11.9 Periodic Maintenance Checklist

Check	Function Required	Daily	Weekly	Every 3,000 Miles or 6 Months	Every 6,000 Miles or 12 Months
Trailer brakes	Test that they are functioning properly	X			
Air pressure	Inflate tires to manufacturer's specifications	X			
Lug bolts or nuts*	Tighten to proper torque specifications			X	
Break-away switch	Test switch operation, inspect connections			X	
Break-away battery	Maintain charge, inspect connections		X		
Wheel rims	Inspect for dents, damage, or out of round			X	
Brake shoes**	Test brake drag and adjust if required			X	
Brake magnets	Inspect for uneven wear				X
Wheel bearings and cups	Inspect for wear or damage and lubricate				X
Hub/drum	Inspect for heavy scoring or wear				X
Seals	Inspect for damage or wear				X

* Tighten wheel bolts or nuts every 50 miles for the first 200 miles and after every change in wheel mounting.

** Adjust brakes after first 200 miles, then at above intervals.

12. SAFETY CONSIDERATIONS

12.1 Additional Safety Considerations

1. Sanitize the fresh water system periodically (see sanitizing instructions).
2. Prevent water connection fittings from coming in contact with the ground or drain hose to reduce chance of contamination.
3. Never attempt to repair gas or electrical appliances. Enlist services of a qualified technician.
4. Always have a serviceable fire extinguisher located in an easily accessible location. This extinguisher should have a rating of at least 2 BC units.
5. Never overload your vehicle (See limits 2.3).
6. Avoid improper load distribution which can adversely affect roadability and towing safety (2.3).
7. Insure that tires are in good condition and properly inflated. Watch inflation especially close for tandem wheel models - under-inflated tires get hot. Hot tires are more apt to blow out.
8. Check and tighten wheel lugs regularly. (Torque to 100 lbs.)
9. Test brakes in a safe area, not while traveling a busy highway.
10. Disconnect television power cord and antenna lead-during local thunderstorm and lightning activity.
11. Always solidly block trailer wheels before unhitching.
12. Before leaving a camp area with a trailer in tow, insure that the safety pin or locking lever is seated, break wire is attached to tow vehicle, and the electrical cord and safety chains are connected.
13. Have wheel bearings cleaned and packed at regular intervals.
14. Check condition of trailer brake magnets and lining periodically.
15. Observe warning labels attached to your vehicle concerning LP-Gas, water, electricity, and loading.
16. All heat producing appliances should be turned off before trailer is lowered. Also turn off valve at LP-Gas cylinder.
17. Read appliance manufacturer's instructions before attempting to light or operate appliances.
18. Normally store trailer in the lowered position. If stored in the raised position, (for an extended period of time) grease the exposed thrust rod of the hydraulic cylinder.
19. This warning label (figure 1) has been located in the cooking area to remind you to provide an adequate supply of fresh air for combustion. Unlike homes, the amount of oxygen supply is limited due to the size of the recreational vehicle and proper ventilation when using the cooking appliances) will avoid dangers of asphyxiation. It is especially important that cooking appliances not be for comfort heating as the danger for asphyxiation is greater when the appliance is used for long periods of time.
20. This warning label (figure 2) has been placed in the vehicle near the range area.

WARNING:
IT IS NOT SAFE
TO USE COOKING APPLIANCES
FOR COMFORT HEATING
Cooking appliances need fresh air for
safe operation. Before operation:
1. Open overhead vent or turn
on exhaust fan and;
2. Open Window.

Figure 1

IF YOU SMELL GAS:

1. Extinguish any open flames, pilot lights and all smoking materials.
2. Do not touch electrical switches.
3. Shut off the gas supply at the tank valve(s) or gas supply connection.
4. Open doors and other ventilating openings.
5. Leave the area until odor clears.
6. Have the gas system checked and leakage source corrected before using again.

Figure 2

21. **Warning:** Portable fuel burning equipment including wood and charcoal grills and stoves shall not be used inside recreational vehicles.
22. **Warning:** Do not bring or store LP gas containers, gasoline or other flammable liquids inside the vehicle because a fire or explosion may result.
23. **Warning:** LP-gas containers shall not be placed or stored inside the vehicle.
LP-gas containers are equipped with safety devices which relieve excessive pressure by discharging gas to the atmosphere.
24. A warning label has been located near LP gas container. This label reads: Do not fill container(s) to more than 80 percent of capacity.
25. LP-gas regulators must always be installed with the diaphragm vent facing downward. Regulators that are not in compartments have been equipped with a protective cover. Make sure that regulator vent faces downward and that cover is kept in place to minimize vent blockages which could result in excessive gas pressure causing fire or explosion.

12.2 Safety When Emergency Stopping

Always carry road flares and/or reflective triangular highway warning devices to be displayed when necessary. Pull off the roadway as far as possible when changing flats or for emergency situations. Turn on your vehicular hazard warning flashers when parked alongside a roadway, if only for a few minutes. Get members of your family out of the RV and have them stand clear of the vehicle area when parked on the edge of a highway.

12.3 Reporting Safety Defects

If you believe that your vehicle has a defect which could cause a crash or could cause injury or death, you should immediately inform the National Highway Traffic Safety Administration (NHTSA) in addition to notifying TowLite, Inc.

If NHTSA receives similar complaints, it may open an investigation and if it finds that a safety defect exists in a group of vehicles, it may order a recall and remedy campaign. However, NHTSA cannot become involved in individual problems between you, your dealer or TowLite, Inc.

To contact NHTSA, you may either call the Auto Safety Hotline toll-free or 1-800-424-9393 (or 366-0123 in the Washington, D.C. area) or write to: NHTSA, U.S. Department of Transportation, Washington, D.C. 20590. You can also obtain other information about motor vehicle safety from the Hotline.

Tires

Goodyear Marathon
Original: 175/80 R 13

Load Rating C (6ply)

Dia listed as 24"

MAX CAPACITY 1360 LBS

MAX AIR 50 PSI

Trailer width: 94"

Rim: 5 Lug

4.5" bolt circle

3 1/8" center hole

TowLite

LIFETIME LIMITED WARRANTY ON HYDRAULIC LIFTING SYSTEM

TowLite, Inc. 500 S. Main St. Bellville, Ohio 44813 WARRANTS THAT IT WILL REPLACE ANY PART OF YOUR TowLite, Inc. HYDRAULIC LIFTING SYSTEM (EXCLUDING THE BATTERY) WHICH BECOMES BROKEN OR INOPERATIVE DUE TO DEFECT IN MATERIAL OR WORKMANSHIP. ADJUSTMENT OF THE CABLES AND POWER UNITS ARE NOT INCLUDED.

THIS WARRANTY IS EXTENDED ONLY TO THE ORIGINAL PURCHASER OF THE TowLite, Inc. TRAILER IN WHICH THE HYDRAULIC LIFTING SYSTEM IS INSTALLED.

DAMAGE WHILE IN THE POSSESSION OF THE CONSUMER RESULTING FROM LACK OF PROPER CARE, NEGLIGENCE, USE OTHER THAN AS RECOMMENDED BY THE "CARE & USE MANUAL," OR FROM THE INVOLVEMENT OF THE TowLite, Inc. TRAILER IN A COLLISION OR OTHER ACCIDENT IS NOT COVERED BY THIS WARRANTY. THE WARRANTY DOES NOT COVER ANY TRAILER WHICH HAS BEEN LEASED, LOANED, RENTED OR USED COMMERCIALY.

THE TowLite, Inc. TRAILER MUST BE RETURNED TO THE TowLite, Inc. DEALER FOR ROUTINE INSPECTION AND, WHERE APPLICABLE, SERVICE DURING THE 24 MONTHS IMMEDIATELY FOLLOWING DATE OF SALE.

IMPLIED WARRANTIES ON YOUR TowLite, Inc. HYDRAULIC LIFTING SYSTEM SHALL BE IN EFFECT ONLY FOR THE DURATION OF THE EXPRESS WARRANTIES AND UPON CONCLUSION OF THE EXPRESS WARRANTIES, THERE SHALL BE NO WARRANTIES EXPRESS OR IMPLIED (INCLUDING MERCHANTABILITY AND FITNESS FOR PURPOSE) ON YOUR TowLite, Inc. HYDRAULIC LIFTING SYSTEM.

SOME STATES DO NOT ALLOW LIMITATION ON HOW LONG AN IMPLIED WARRANTY LASTS OR THE EXCLUSION OR LIMITATION OF INCIDENTAL OR CONSEQUENTIAL DAMAGES SO THE ABOVE LIMITATION MAY NOT APPLY TO YOU.

THIS WARRANTY GIVES YOU SPECIFIC LEGAL RIGHTS AND YOU MAY ALSO HAVE OTHER RIGHTS WHICH VARY FROM STATE TO STATE.

HOW TO OBTAIN SERVICE

TO OBTAIN SERVICE UNDER THIS WARRANTY, RETURN YOUR TowLite, Inc. TRAILER TO THE TowLite, Inc. DEALER WHO SOLD YOU THE TRAILER. THE DEALER WILL PROVIDE A FREE REPLACEMENT PART FOR ANY OF THE HYDRAULIC LIFTING SYSTEM FOUND TO BE DEFECTIVE. THERE WILL BE NO CHARGE FOR LABOR FOR REMOVAL AND REPLACEMENT DURING THE FIRST 72 MONTHS FROM DATE OF PURCHASE OF THE TRAILER.

THE TowLite, Inc. CERTIFIED CUSTOMER CARE REGISTRATION CARD MUST BE RETURNED TO TowLite, Inc. WITHIN 5 DAYS FROM DATE OF PURCHASE FOR THE WARRANTY TO BE EFFECTIVE.