



INSTALLATION & SERVICE MANUAL



FOR YOUR SAFETY AN ODORANT HAS BEEN ADDED
TO THE GAS USED BY THIS APPLIANCE.

IF YOU SMELL GAS:

1. Open windows.
2. Don't touch electrical switches.
3. Extinguish any open flame.
4. Immediately call your gas supplier.

GAS WATER HEATERS

RV-6

RV-6-M

Do not store or use combustible materials or liquids near or adjacent to this heater. The appliance shall not be installed in any location where flammable liquids or vapors are likely to be present.

INSTALLER: Affix these instructions to or adjacent to water heater.

OWNER: Retain these instructions and warranty for future reference.



American

APPLIANCE MFG. CORP.

2341 Michigan Avenue
Santa Monica, California 90404

Telephone: 213-829-1755

INSTALLATION REQUIREMENTS

This installation must conform with the requirements of the authority having jurisdiction or, in the absence of such requirements, with the National Fuel Gas Code, ANSI Z223.1-1974;

1. The appliance shall be disconnected from the gas supply piping system during any pressure testing of that system.
2. The appliance and its gas connection shall be leak tested before placing the appliance in operation.

This installation must conform also with the American National Standard for Recreational Vehicles A119.2-1975; in Canada, CSA Z240.4.

INSTALLATION INSTRUCTIONS

Minimum clearance from combustible materials on top, sides, floor, and rear = 0 inches.

MODELS

RV-6 & RV-6-M

FIGURE 1

1. Provide an opening flush with floor in outer wall of coach as shown.
2. Construct a wooden frame and fasten it securely to inner wall of coach. Maintain inside dimensions.

FIGURE 1

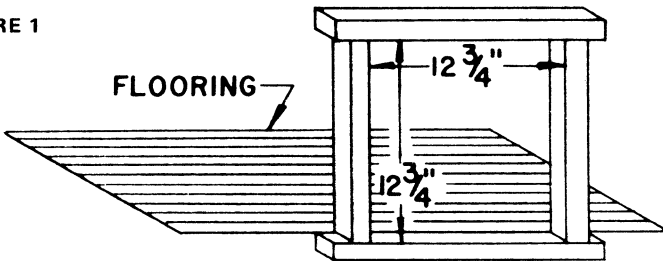


FIGURE 2

1. Insert heater into framed opening. Place caulking sealant between heater flange and outer wall of the coach to insure a water-tight bond. Secure heater to wall using (12) #8 x 3/4" wood screws, screwed through holes in front mounting panel of heater.
2. To install door, slip one hinge pin into slot on each side of door, then insert other end of hinge pins behind spring brackets on heater frame. Close door so that latch protrudes through slot in door. Turn latch 90 degrees to fasten the door.

FIGURE 2

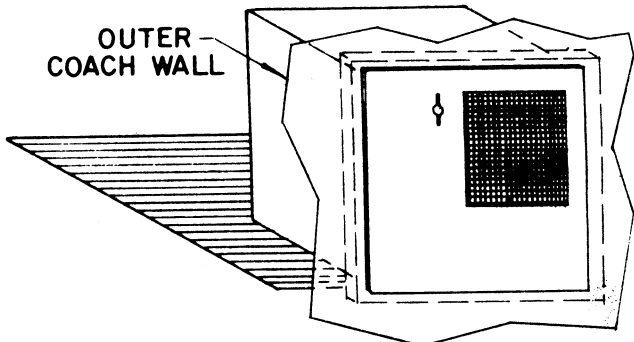


FIGURE 3

1. Connect water lines to fittings provided, $\frac{1}{2}$ " NPT female pipe threads.
2. Connect $\frac{3}{8}$ " NPT gas supply piping to gas connection supplied with heater. Turn on gas and check system for leaks, using soap and water solution. Be sure there are no leaks.
3. For lighting, see lighting instructions provided.

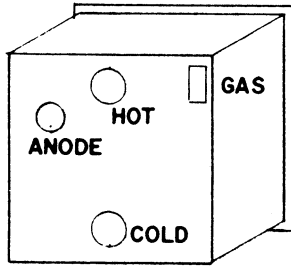


FIGURE 3

FIGURES 4 & 5
INSTALLATION OF MOTOR-AID EXCHANGER
MODELS
RV-6 & RV-6-M

Connect heat exchanger to engine heater system using the "Y" hose fittings provided, connect two $\frac{5}{8}$ " heater hoses to heater lines of engine and copper tube outlets on exchanger. Clamp the hoses to exchanger tubes and "Y"s with hose clamps. Be sure water circulates with the engine running.

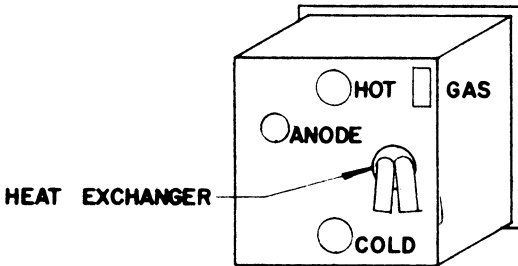


FIGURE 4

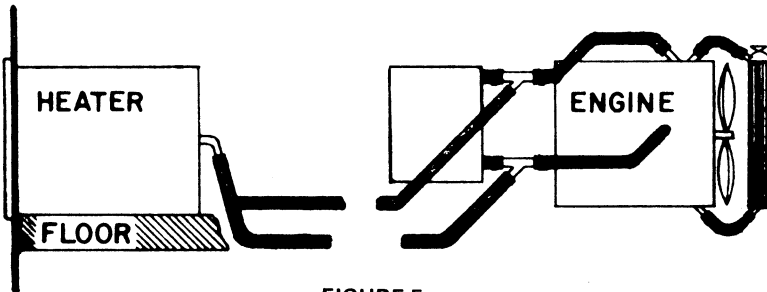


FIGURE 5

LIGHTING INSTRUCTIONS

1. Turn gas cock to OFF position, wait five minutes.
2. Turn to pilot position, press reset button and light pilot. Hold down until pilot remains lit. Turn to ON position.
3. Set temperature indicator knob to desired temperature.
4. If pilot goes out, repeat steps 1, 2, and 3.
5. To shut down heater, turn to OFF position.

AIR SHUTTER ADJUSTMENT INSTRUCTIONS

1. Loosen nut & bolt (A).
2. Slide air shutter (B) to right or left to obtain proper blue flame.
3. Secure nut & bolt.
4. Parts: (C) = Gas cock
(D) = Reset button
(E) = Pilot regulator
(F) = Temperature indicator

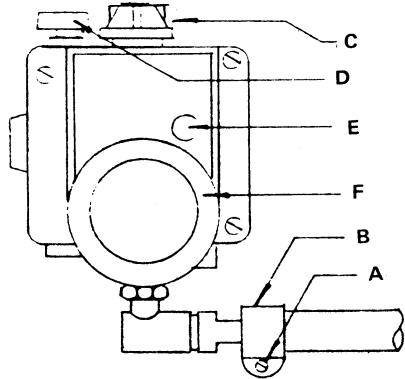


FIGURE 6

PROPER BURNER AND PILOT FLAME

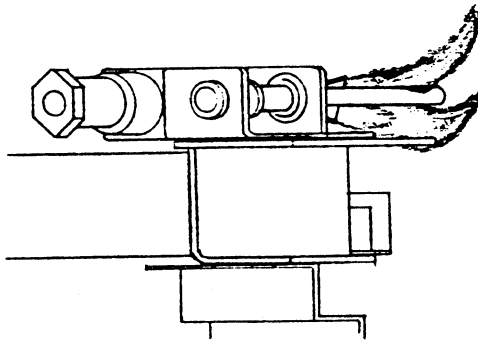


FIGURE 7. PILOT FLAME

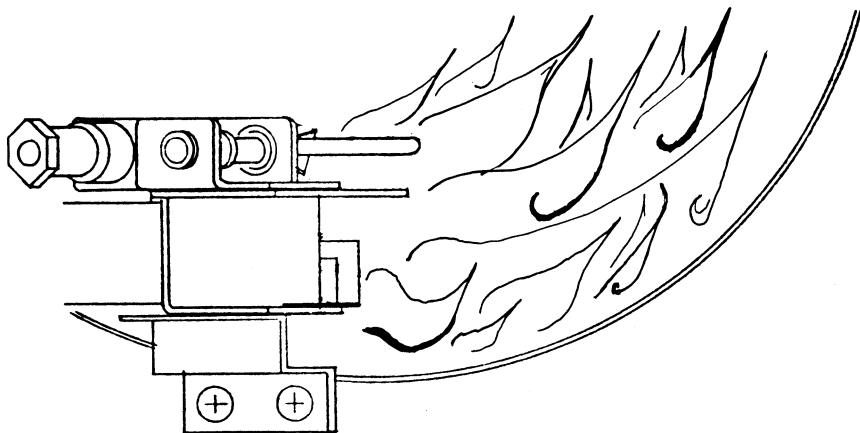


FIGURE 8. BURNER FLAME

BURNER AND PILOT

All air shutters are pre-set at the factory to obtain a blue or orange-blue flame. If necessary to adjust your air shutter, be sure to keep this color and do not allow burner to burn yellow or sooting will occur.

In cases where excessive sooting has occurred in a water heater, there is a possibility that it can be corrected by making the correct air shutter adjustment, or by reducing the size of the pilot flame to make the pilot burn more blue in color. If the flame still continues to burn yellow, chances are there could be an obstruction in the burner, pilot, or flue box. Clean these units by blowing out. If the water heater pilot and burner are both burning properly (orange-blue flame) check to make sure the thermostat is shutting off clean. This can be done by turning the temperature dial all the way to the left (counter-clockwise). When this is done, the gas should shut off completely.

TEMPERATURE AND PRESSURE RELIEF VALVE

The temperature and pressure relief valve is designed to open if the temperature of the water within the heater reaches 210 degrees, or, if the water pressure in the water heater reaches 125 lbs. Normally the water temperature will not reach the 210 degree setting. If your water heater is installed with a check valve between the water heater and the water supply (the usual installation with a demand system), the pressure in the water heater will normally reach 125 psi during the heating cycles. In such cases the water will drip from the relief valve each time the water is heated. This is normal and does not indicate a defect in the relief valve.

The following chart can be used as a guide that will enable you to solve most of the problems that the customer could have with his water heater.

WATER HEATER SERVICE ANALYSIS

Sooting	Pilot Will Not Come On	No Hot Water (Pilot Will Not Stay On	Not Enough Hot Water	Water Too Hot	Possible Cause
	X				Possible malfunction of the bottled gas regulator.
	X	X			Lint in pilot air opening.
		X			Loose or inoperative thermocouple.
	X	X			Clogged pilot orifice.
		X			Improper pilot flame.
			X		Thermostat setting too low.
			X		Main burner orifice too small (or clogged).
				X	Thermostat setting too high.
				X	Pilot flame adjustment too high.
X					Thermostat not shutting off completely.
X					Yellow pilot—due to improper setting.
X					Yellow flame—due to improper air shutter adjustment.
X					Lint or dirt in pilot or pilot orifice.
X					Lint or dirt in burner tube.
X					Leaves or other obstructions in flue box.

Since the cost including installation of a thermocouple is relatively small, it is a good practice to replace it in cases where the pilot does not stay lit. If the pilot fails to stay lit after the thermocouple has been replaced, the chances are high that the electro-magnet in the control, or in the built-in E.C.O. (Energy Cutoff Device) is defective. In such cases the easiest solution is to replace the control. If desired, the control components, either the magnet or the E.C.O., may be checked before replacing the control.

MAINTENANCE

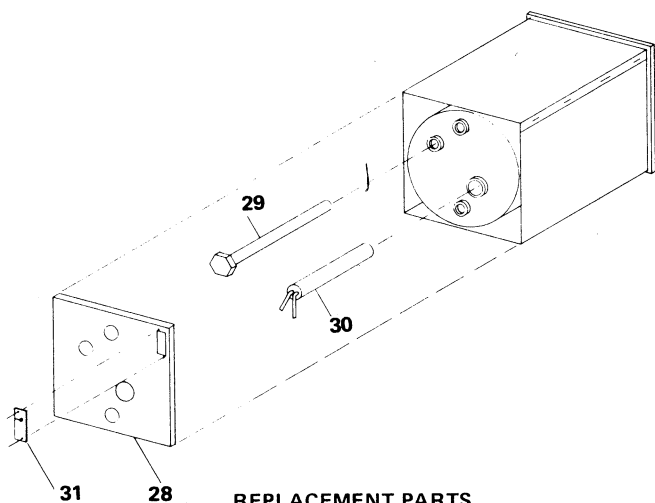
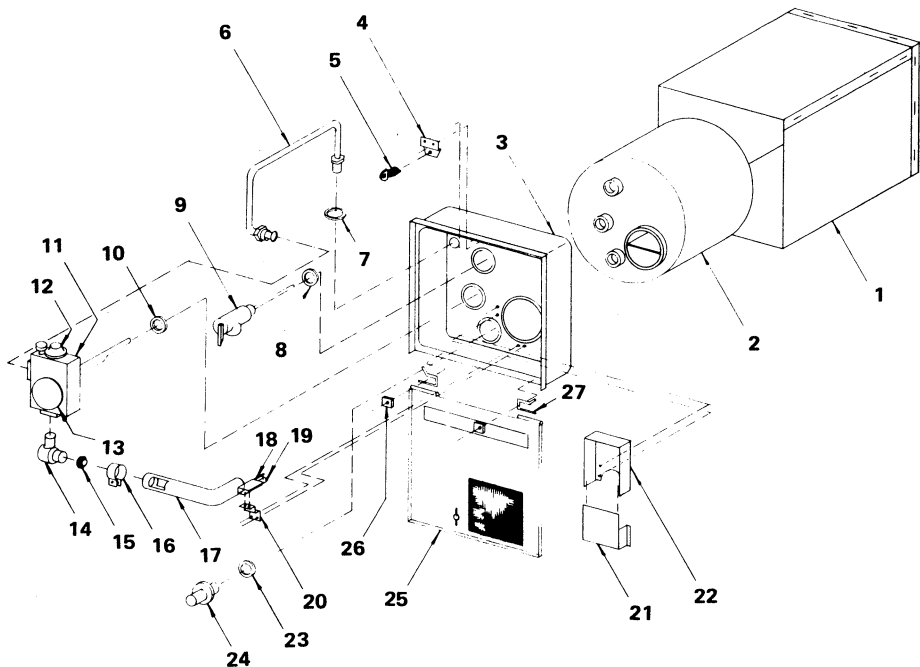
This water heater will operate with a minimum of attention. Should occasion arise that the water be drained, be certain to turn off the gas to the water heater, close the valve on the cold water inlet supply and open the hot water faucet to allow air to enter system. The drain cock is threaded to receive a standard hosecoupling.

Periodically check control compartment and screen in door to see that no foreign material has accumulated to prevent flow of combustion and ventilating air.

Periodically check burner and pilot flames visually, compare with sketch under the Burner Adjustment section. **NOTE: BE CERTAIN TO REFILL HEATER WITH WATER BEFORE RELIGHTING. DO NOT STORE COMBUSTIBLE MATERIALS OR LIQUIDS NEAR OR ADJACENT TO THIS WATER HEATER.**

MAINTENANCE OF "MOTOR-AID" HEAT EXCHANGER ON MODELS

The Motor-Aid Heat Exchanger is designed to operate safely and efficiently for an indefinite period of time and should require no maintenance. Be sure to check your heater hoses for cracks after the first year of operation, since a cracked or broken hose could cause a great inconvenience on an outing.



REPLACEMENT PARTS

REPLACEMENT PARTS AND PRICE LIST FOR MODELS RV-6 & RV-6-M

Ref. No.	P/N	Part Name	Price
1.		Jacket (2 piece) RV-6 & RV-6-M	Not a Replacement Part
2.		Tank RV-6 & RV-6-M	Not a Replacement Part
3.		Control Compartment*	Not a Replacement Part
4.		Door Latch Bracket50
5.	26031	Door Latch Assy.90
6.	37066	Gas Supply Manifold RV-6 & RV-6-M	4.00
7.	44000	Front Gas Supply Manifold Grommet*20
8.	44013	Flange for Temperature and Pressure Relief Valve*30
9.	43023	Temperature and Pressure Relief Valve	6.50
10.	44013	Flange for Thermostat*30
11.	32127	Thermostat, #R103 RVLPTPA*	36.00
12.	49001	Thermostat On-Off Knob65
13.	49000	Thermostat Temperature Control Knob*65
14.	37060	Burner Manifold*	3.50
15.	36042	Burner Orifice*90
16.	31039	Air Shutter*46
17.	30003	Burner Assy*	3.00
18.	32082	Thermocouple, 12''*	4.50
19.	32070	Pilot Assy*	4.80
20.	31040	Burner Bracket*50
21.	20034	Flue Collector Front*	3.00
22.	27074	Flue Collector Back*	5.00
23.	44019	Flange for Drain Valve*30
24.	43007	Drain Valve*	1.50
25.	20063	Door, Screen Included*	10.50
26.		Hinge Bracket25
27.		Door Hinge25
28.	21044	Rear Cover RV-6	1.90
	21045	Rear Cover RV-6-M	1.90
29.	47070	Anode Rod (Magnesium)*	9.26
30.	30021	Motor-Aid, Heat Exchanger, RV-6-M	21.90
31.	44015	Rear Gas Supply Manifold Grommet*75

NOTE: All screws in assembly are standard hardware items.

When ordering parts, be certain to specify the **exact** model number of your heater, complete serial number, reference number and the name of the part from this list. All parts not covered by the warranty will be shipped C.O.D.

Warranty covers mechanical parts for a period of one year only.

Prices effective June, 1977. Subject to change without notice.

(*) = Standard Part — All Models.