

BKR NO.	BKR SIZE	BKR TYPE	FUNCTION
MAIN	50	TWIN	LEG #1 FEED
MAIN	50		LEG #2 FEED
- A	15	TWIN	MICROWAVE
- B	20		AIR CONDITIONER #1
- C	15	TWIN	GFCI OUTLETS
- D	20		AIR CONDITIONER #2
- E	15	TWIN	UTILITY #1, FAN
- F	15		WATER HEATER
- G	15	TWIN	UTILITY #2, REFER
- H	20		CONVERTER
- I	15	TWIN	FIREPLACE
- J	15		CENTRAL VACUUM

NOTES:

1. REFER TO PRINT 0.008.219/565 FOR LOAD CENTER 120 VOLT 50 AMPRE.
2. REFER TO PRINT 0.000.766/575 FOR FAN DETAIL.
3. REFER TO PRINT 0.018.914/565 FOR 50 AMP GENERATOR TRANSFER SWITCH.
4. EXTERIOR RADIO OPTION REPLACES WEATHER PROOF RECEPT.
5. \*=WITH CENTRAL VACUUM OPTION.

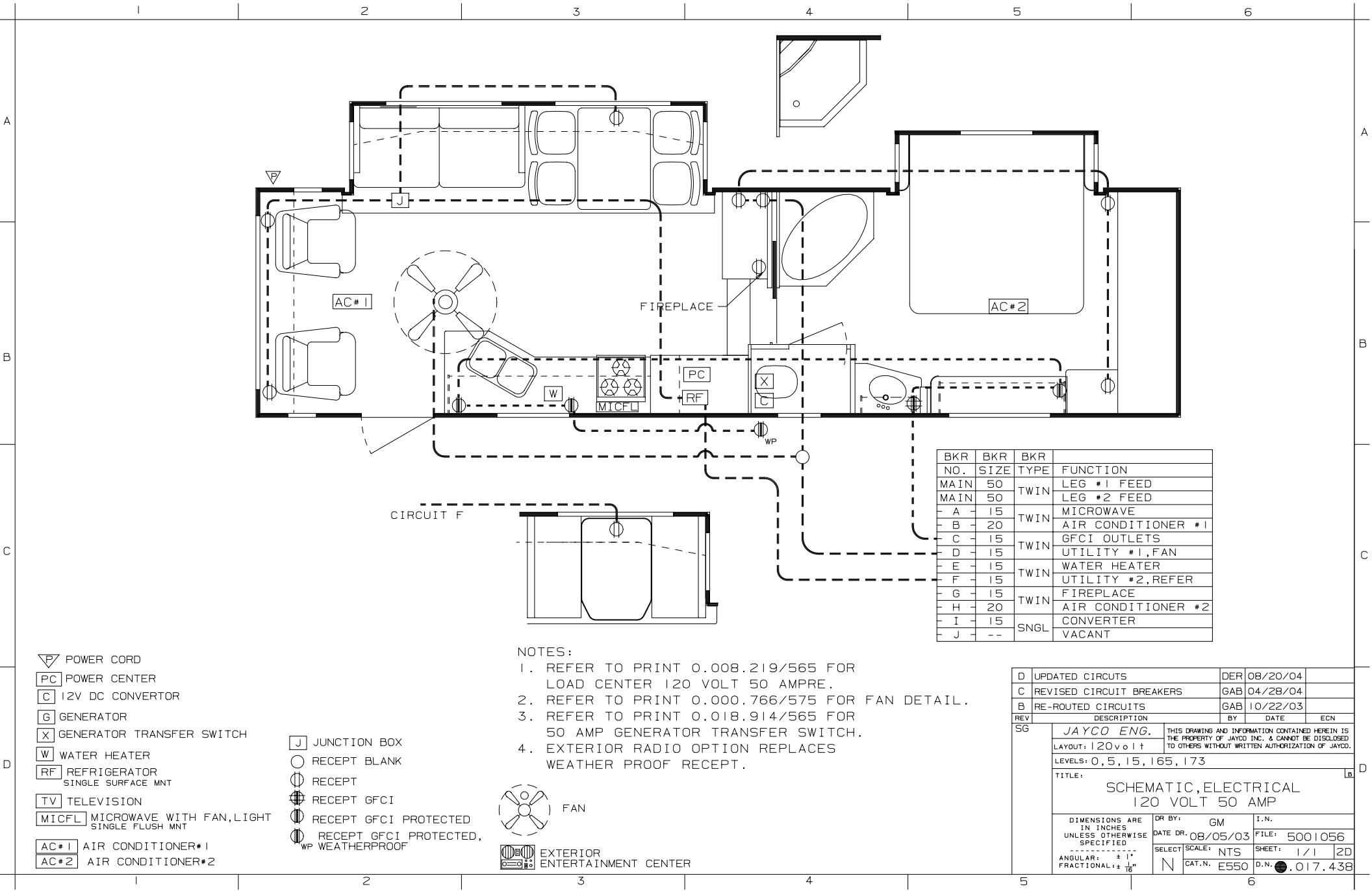


FAN



EXTERIOR ENTERTAINMENT CENTER

E	MC06 UPDATE BREAKERS	GAB	03/30/05	
D	UPDATED CIRCUITS	DER	08/20/04	
C	REVISED CIRCUIT BREAKERS	GAB	04/28/04	
REV	DESCRIPTION	BY	DATE	ECN
SG	JAYCO ENG.			
LAYOUT: 120 volt				
LEVELS: 0, 5, 15, 165, 173				
TITLE: SCHEMATIC, ELECTRICAL 120 VOLT 50 AMP				
DIMENSIONS ARE IN INCHES UNLESS OTHERWISE SPECIFIED		DR BY: GM	I.N.	
ANGULAR: ± 1°		DATE DR: 08/05/03	FILE: 5001056	
FRACTIONAL: ± 1/16"		SELECT SCALE: NTS	SHEET: 1/1	2D
		CAT.N. E550	D.N. 0.017.438	



▽ POWER CORD

PC POWER CENTER

C 12V DC CONVERTOR

G GENERATOR

X GENERATOR TRANSFER SWITCH

W WATER HEATER

RF REFRIGERATOR  
SINGLE SURFACE MNT

TV TELEVISION

MICFL MICROWAVE WITH FAN, LIGHT  
SINGLE FLUSH MNT

AC#1 AIR CONDITIONER#1

AC#2 AIR CONDITIONER#2

J JUNCTION BOX

○ RECEPT BLANK

⊗ RECEPT

⊗ RECEPT GFCI

⊗ RECEPT GFCI PROTECTED

⊗ RECEPT GFCI PROTECTED,

WP WEATHERPROOF



FAN

EXTERIOR ENTERTAINMENT CENTER

NOTES:

1. REFER TO PRINT 0.008.219/565 FOR LOAD CENTER 120 VOLT 50 AMPRE.
2. REFER TO PRINT 0.000.766/575 FOR FAN DETAIL.
3. REFER TO PRINT 0.018.914/565 FOR 50 AMP GENERATOR TRANSFER SWITCH.
4. EXTERIOR RADIO OPTION REPLACES WEATHER PROOF RECEPT.

BKR NO.	BKR SIZE	BKR TYPE	FUNCTION
MAIN	50	TWIN	LEG #1 FEED
MAIN	50		LEG #2 FEED
- A	15	TWIN	MICROWAVE
- B	20		AIR CONDITIONER #1
- C	15	TWIN	GFCI OUTLETS
- D	15		UTILITY #1, FAN
- E	15	TWIN	WATER HEATER
- F	15		UTILITY #2, REFER
- G	15	TWIN	FIREPLACE
- H	20		AIR CONDITIONER #2
- I	15	SNGL	CONVERTER
- J	--		VACANT

D	UPDATED CIRCUITS	DER	08/20/04	
C	REVISED CIRCUIT BREAKERS	GAB	04/28/04	
B	RE-ROUTED CIRCUITS	GAB	10/22/03	
REV	DESCRIPTION	BY	DATE	ECN
SG	JAYCO ENG.			
LAYOUT: 120 volt				
LEVELS: 0, 5, 15, 165, 173				
TITLE: SCHEMATIC, ELECTRICAL 120 VOLT 50 AMP				
DIMENSIONS ARE IN INCHES UNLESS OTHERWISE SPECIFIED		DR BY: GM	I.N.	
ANGULAR: ± 1°		DATE DR: 08/05/03	FILE: 5001056	
FRACTIONAL: ± 1/16"		SELECT SCALE: NTS	SHEET: 1/1 2D	
		CAT.N. E550	D.N. .017.438	

A

B

C

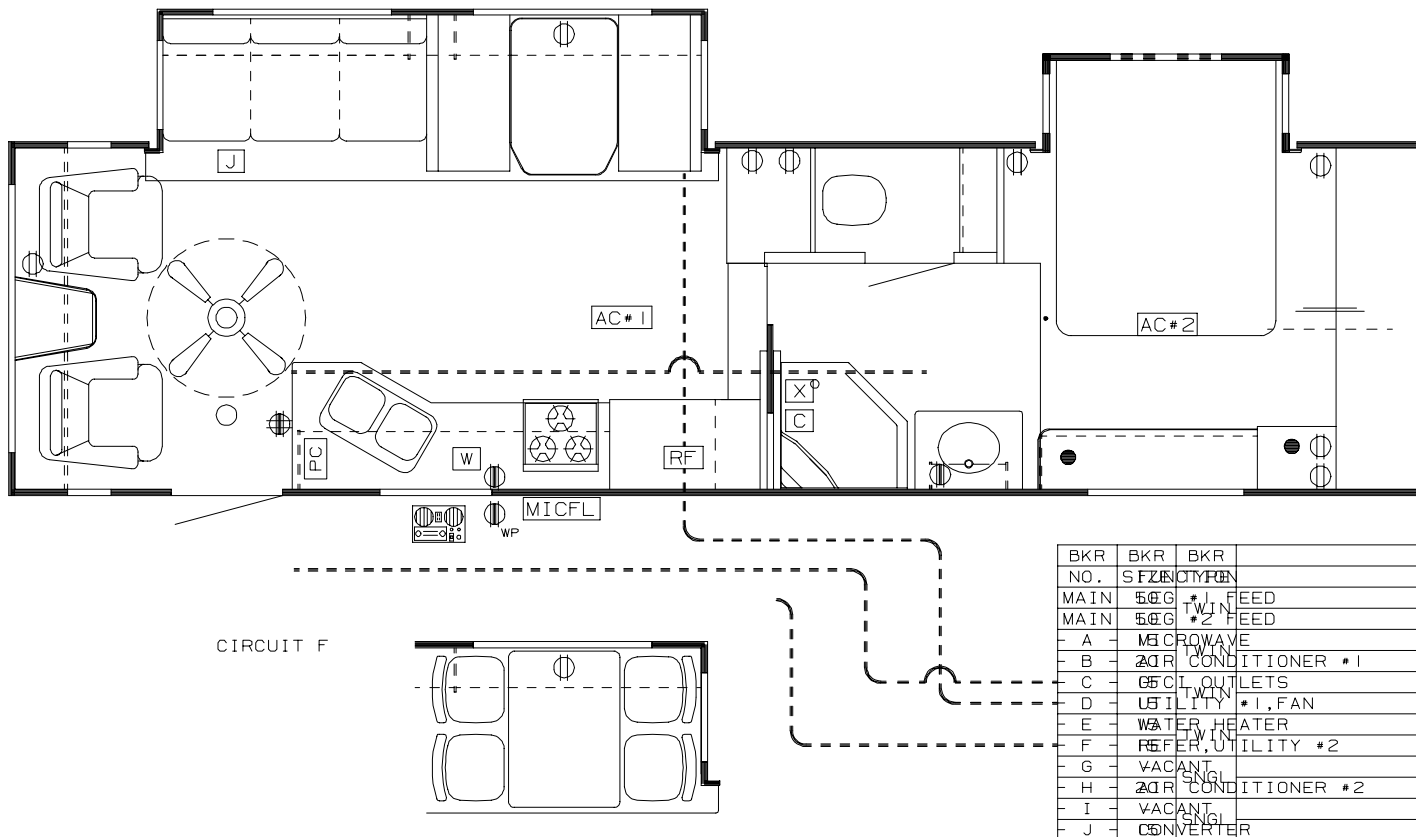
D

A

B

C

D



BKR NO.	BKR	BKR	
MAIN	50G	#1	FEED
MAIN	50G	#2	FEED
A	M	CROW	WAVE
B	2QR	COND	ITIONER #1
C	65	CT	OUTLETS
D	UT	ILITY	#1, FAN
E	W	ATER	HEATER
F	REF	ER	UTILITY #2
G	V	VACANT	
H	2QR	COND	ITIONER #2
I	V	VACANT	
J	C	ONVERTER	

NOTES:

1. REFER TO PRINT 0.008.219/565 FOR LOAD CENTER 120 VOLT 50 AMPRE.
2. REFER TO PRINT 0.000.766/575 FOR FAN DETAIL.
3. REFER TO PRINT 0.002.524/565 FOR 50 AMP GENERATOR TRANSFER SWITCH.
4. EXTERIOR RADIO OPTION REPLACES WEATHER PROOF RECEPT.

POWER CORD

PC POWER CENTER

C 12V DC CONVERTOR

G GENERATOR

X GENERATOR TRANSFER SWITCH

W WATER HEATER

RF REFRIGERATOR

TV TELEVISION

MICFL MICROWAVE WITH FAN,LIGHT

AC#1 AIR CONDITIONER#1

AC#2 AIR CONDITIONER#2

J JUNCTION BOX

RECEPT BLANK

RECEPT

RECEPT GFCI

RECEPT GFCI PROTECTED

RECEPT GFCI PROTECTED,

WP WEATHERPROOF



FAN



EXTERIOR ENTERTAINMENT CENTER

B	RE-ROUTED CIRCUITS	GAB	10/22/03	
A	MOVE RECEPT IN BEDROOM	GM	10/06/03	
REV	DESCRIPTION	BY	DATE	ECN
SG	JAYCO ENG. LAYOUT: 120 volt			
LEVELS: 0, 5, 15, 165, 173, 366				
TITLE: SCHEMATIC, ELECTRICAL 120 VOLT 50 AMP				
DIMENSIONS ARE IN INCHES UNLESS OTHERWISE SPECIFIED		DR BY: GM	I.N.	
ANGULAR: ± 1°		DATE DR: 08/05/03	FILE: 5001056	
FRACTIONAL: ± 1/16"		SELECT SCALE: NTS	SHEET: 1/1	2D
		CAT.N. E550	D.N. 0.017.438	