

476" - 39' 8" KING PIN TO BUMPER LENGTH
491" - 40' 11" OVERALL LENGTH

SQUARE FEET AREA OF UNIT
399 SQ. FT.

- ◆ - STATE/RV INSIGNIA
- ◇ - FED. TAG & MFG. ID
- tg - GAS INLET
- ⊙ - FIRE EXT.
- ⊙ - SEWAGE DRAIN
- ⊙ - SMOKE ALARM
- - LP GAS DETECTOR
- tw - WATER INLET

- - WARM AIR REGISTER
- ⊙ - WARM AIR REGISTER
- te - ELECTRIC INLET

UNIT COMPLIES WITH CSA Z240 RV SERIES-2011
INTERIOR DOORS/PARTITIONS ARE NON-LOCKING


APPLICABLE STANDARD: NFPA 1192-2011

SYSTEMS			
PLUMBING	Rw04-2307	Rw04-4307	
LPG	Rw04-3307		
ELECTRICAL	Rw08-1307		
FIRE&LIFE	5BC FIRE EXTINGUISHER (MIN) EGRESS MEETS REQUIREMENT-17 X 24 (MIN) INTERIOR MATERIALS ARE CLASS C FLAME SPREAD OR BETTER UNIT DOES NOT EXCEED 430 SQ. FT.		

CROSS ROADS (REDWOOD)

- Ⓐ WARNING: IT IS NOT SAFE TO USE COOKING APPLIANCES FOR COMFORT HEAT
- Ⓑ IF YOU SMELL GAS LABEL
- Ⓒ WARNING: TEST SMOKE DETECTOR.
- Ⓓ DO NOT FILL LP-GAS CONT. TO MORE THAN 80% CAPACITY
- Ⓔ WARNING: POTABLE WATER ONLY

- INTERIOR FINISH SHALL BE OF MAT'L'S HAVING FLAME SPREAD RATING OF 200 OR LESS
- INTERIOR TEXTILES MAT'L'S ARE TO CONFORM TO FEDERAL MOTOR VEHICLE STANDARD NO. 302
- 5 lb. B/C FIRE EXTINGUISHER MINIMUM
- VERTICAL CLEARANCE REQUIRED FROM RANGE TOP TO RANGE VENT DOES NOT EXCEED THE MINIMUM 20 3/4".
- MINIMUM LENGTH OF EXPOSED POWER CORD - 30 FT.

Rev	Date:	Revisions	By	 72440 STATE RD 13 SYRACUSE, IN 46567	Title: STATE FLOOR PLAN	
-	-	-	-		Drawn By: RFP	Scale: DNS
					Date: 2/01/11	Sheet No. 1 OF 1
					DRAWING NUMBER	

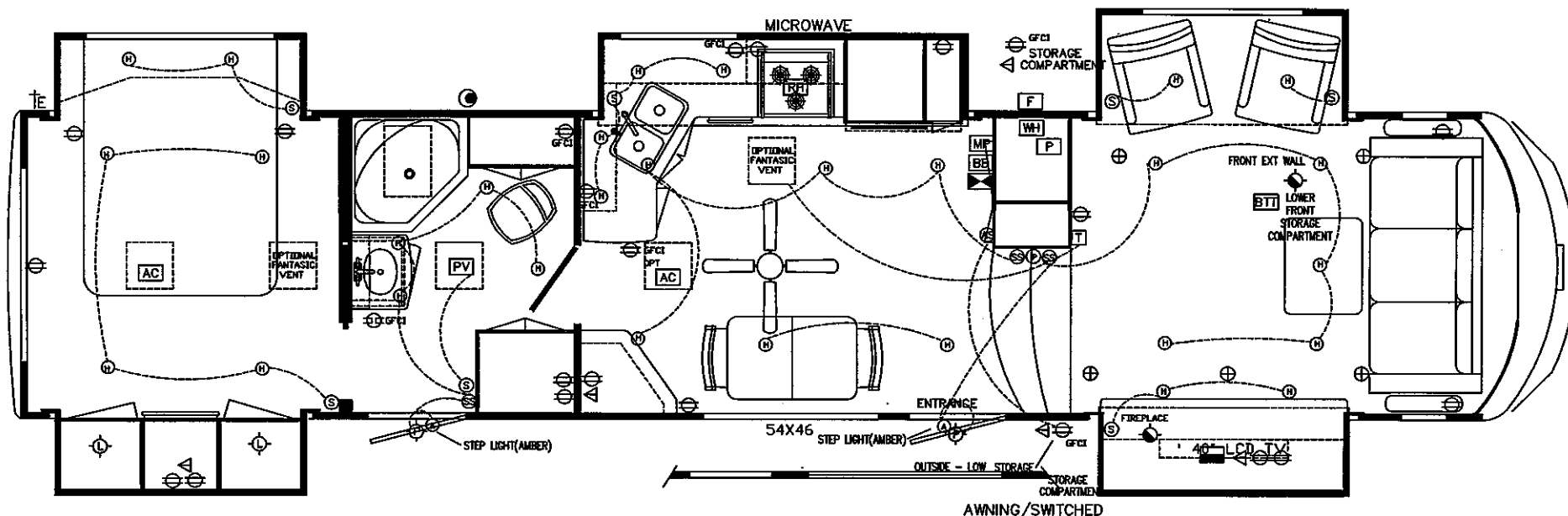
SYMBOLS

⊕ - 110 VOLT RECEPT
 ⊕ - 110 VOLT RECEPT w/GFI
 S - 12 VOLT SWITCH
 ⊕ - LP DETECTOR
 TE - ELECTRIC INLET
 H - 4" HALOGEN
 ○○○○ - KIT LIGHT BAR

MP - MONITOR PANEL
 PV - POWER VENT
 T - THERMOSTAT
 P - WATER PUMP
 RH - POWER RANGE HOOD
 ⊕ - 12 VOLT LIGHT (J-WALL)
 L - 12 VOLT DECOR LIGHT

⊕ - 12 VOLT PORCH LIGHT
 ⊕ - 12 VOLT LIGHT (SINGLE)
 ⊕ - 12 VOLT LIGHT (DOUBLE)
 ⊕ - SPEAKER
 ⊕ - TV JACK, CABLE, SAT
 ⊕ - RADIO
 BTI - BATTERY
 ⊕ - POWER AWNING SWITCH

BB - 12/110 VOLT BREAKER BOX
 ⊕ - CONVERTOR
 F - FURNACE
 WH - WATER HEATER
 AC - AIR CONDITIONER
 ⊕ - 12 VOLT LIGHT W/SWITCH
 ⊕ - 12 VOLT SCARE LIGHT



	15a	15a	15a	15a	15a	20a	50a	50a	15a	20a	15a	15a	15a	15a
CIRCUIT	1	2	3	4	5	6	7	8	9	10	11	12	13	14
50 A	A	B	C	D	E	F	G	H	I	J	K	L	M	N
	TV/BT CENTER	FRONT RECEPTS	GFI RECEPTS	WASHER	DRYER	MAIN A/C	MAIN	MAIN	WATER HEATER	2nd A/C	MICROWAVE	LIVING ROOM	CONVERTOR	OPT FIREPLACE

1 - YELLOW (LP/CO) 3AMP	8 - ORANGE (APPLIANCE) 15AMP
2 - YELLOW (LIVINGROOM) 15AMP	9 - BLACK (BEDROOM) 15AMP
3 - PURPLE (OD SLIDE) 15AMP	10 - BLUE (20A/MOTOR) 20AMP
4 - PINK (HALLWAY) 15AMP	11 - YELLOW (10A/BED MOTOR) 20AMP
5 - RED (BEDSLIDE/BASEMENT) 15 AMP	12 - BLUE (POWER AWNING) 15 AMP
6 - RED (FT CLOSET/HITCH) 15AMP	13 - BROWN (PORCH/SCARE) 15AMP
7 - RED (DS SLIDE) 15AMP	

REDWOOD FW 36FL

- INTERIOR FINISH SHALL BE OF MAT'L'S HAVING FLAME SPREAD RATING OF 200 OR LESS
- INTERIOR TEXTILES MAT'L'S ARE TO CONFORM TO FEDERAL MOTOR VEHICLE STANDARD NO. 302
- 10 LB. B/C FIRE EXTINGUISHER MINIMUM
- VERTICAL CLEARANCE REQUIRED FROM RANGE TOP TO RANGE VENT DOES NOT EXCEED THE MINIMUM 20 3/4".
- MINIMUM LENGTH OF EXPOSED POWER CORD - 30 FT.

Rev	Date:	Revisions	By
A	3/16/11	UPDATE ELEC PLAN AND ISSUE	RFP
B	3/23/11	LENGHTEN UNIT	RFP
C	4/14/11	ADJUST LIGHTING FROM PROTO	RFP
D	6/29/11	ADD RECEPT IN BATHROOM/ MOVE RECEPT IN KIT SLIDE	RFP

REDWOOD
R.V.
72444 STATE RD 13
SYRACUSE, IN 46567

Title: FLOOR PLAN - ELECTRIC

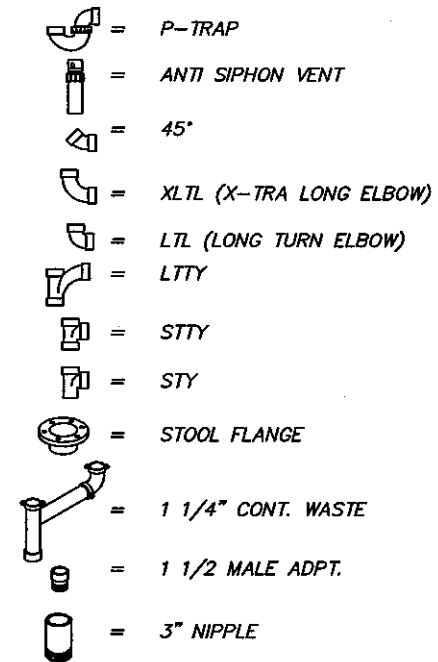
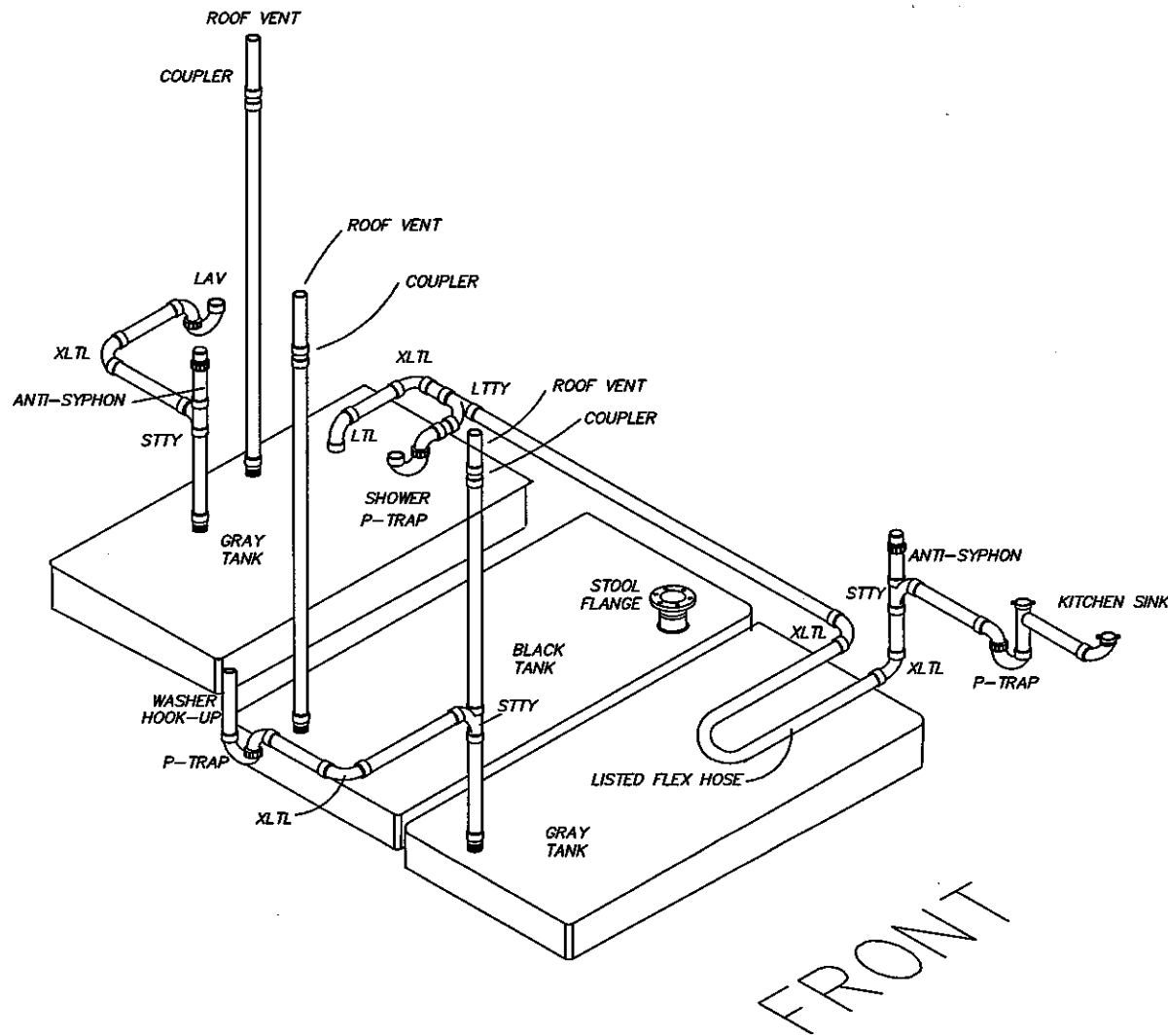
Drawn By: RFP

Scale: DNS

Date: 03/11/11

Sheet No. 1 OF 1

DRAWING NUMBER 08-XXXX



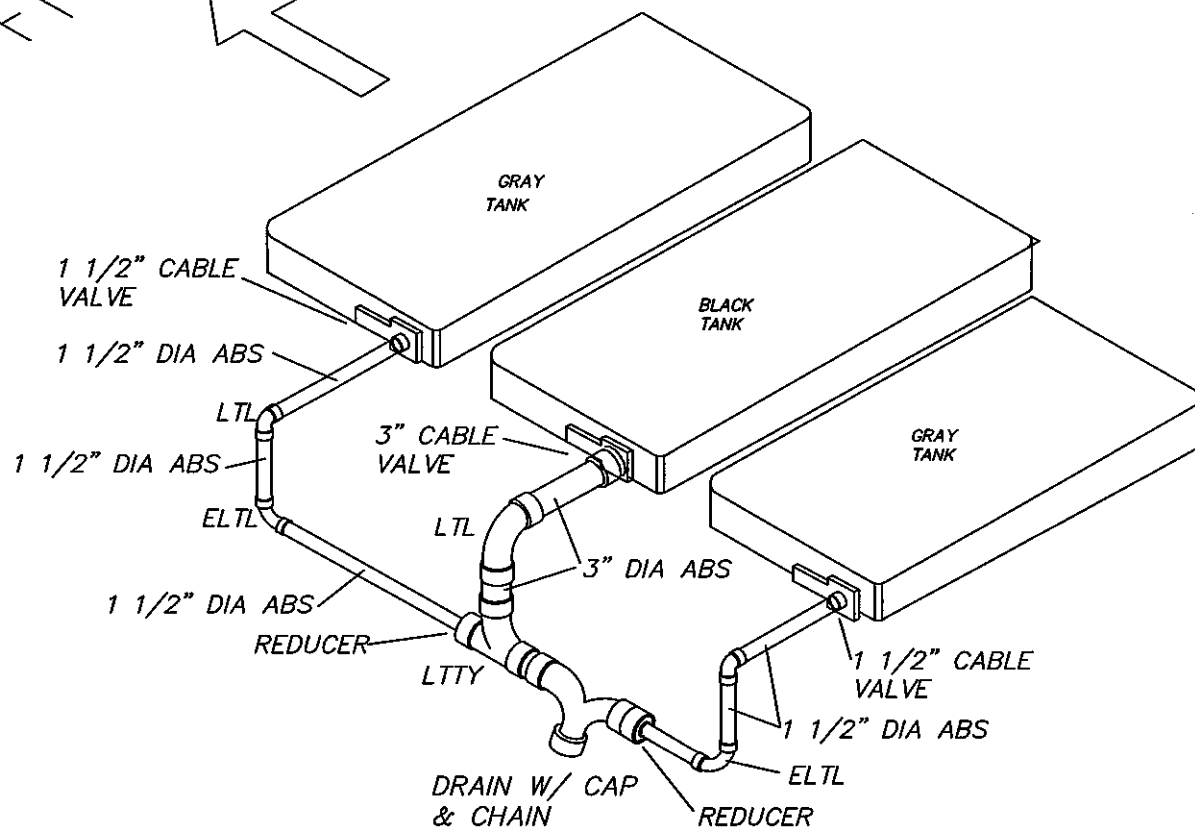
NOTE: ALL FIXTURE P-TRAPS ARE 1 1/2" WITH ADAPTER UNLESS OTHERWISE NOTED.
 LENGTH OF TRAP ARMS MEET THE REQUIREMENTS OF TABLE 7.4.5.4 (NFPA 1192-2011) AND CLAUSE 7.3 (TABLE 2) (CSA Z240 RV SERIES-2011)

REDWOOD RF - 36FL

Rev	Date:	Revisions	By	REDWOOD R.V. 72440 State Rd 13 SYRACUSE, IN 46567		Title: DWV ABOVE FLOOR	
-	-	-	-			Drawn By: RFP	Scale: DNS
						Date: 09/01/11	Sheet No. 1 of 1
						DRAWING NUMBER 04-2307	

FRONT
↑

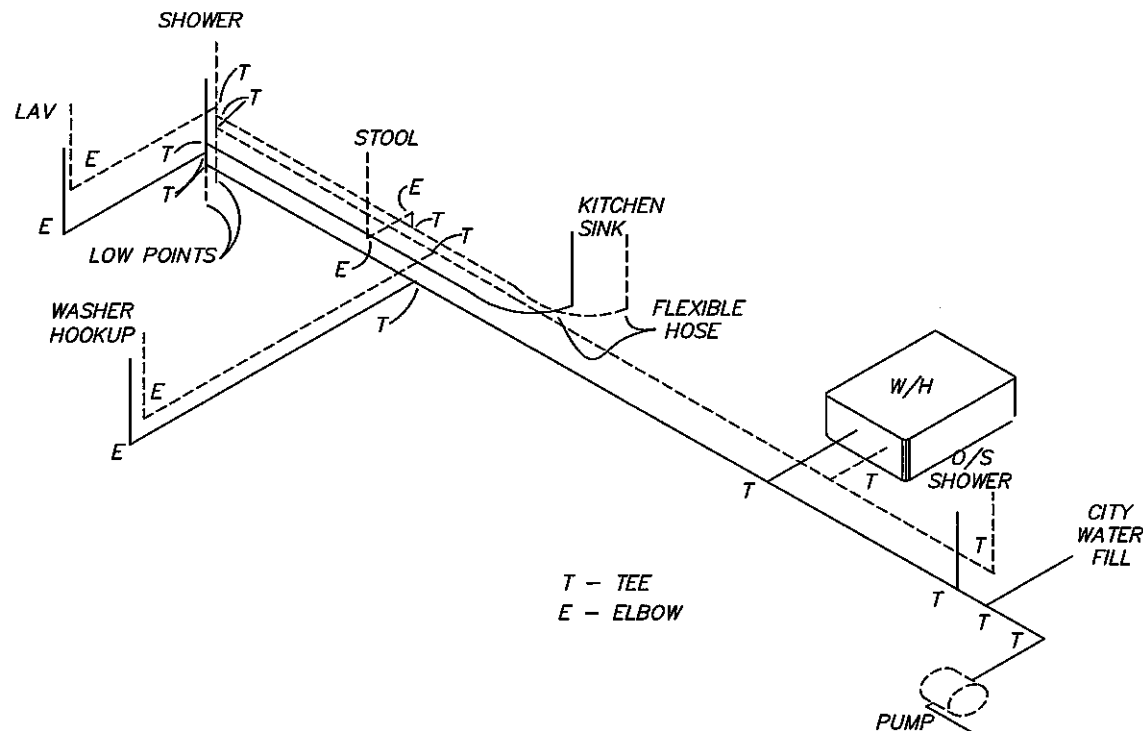
DEL DOUBLE EL
STY SAB TEE
LTL LONG TURN EL
ELTL EXTRA LONG TURN EL
LTTY LONG TURN TEE WYE
45 45 DEGREE EL
CO CLEAN OUT



NOTE: ALL FIXTURE P-TRAPS ARE 1 1/4" WITH ADAPTER UNLESS OTHERWISE NOTED.
LENGTH OF TRAP ARMS MEET THE REQUIREMENTS OF TABLE 7.4.5.4 (NFPA 1192-2011) AND CLAUSE 7.3 (TABLE 2) (CSA Z240 RV SERIES-2011)

REDWOOD FW - 36FL

Rev	Date:	Revisions	By	REDWOOD R.V. 72440 State Rd 13 SYRACUSE, IN 46567		Title: DWV BELOW FLOOR	
-	-	-	-			Drawn By: RFP	Scale: DNS
						Date: 9/01/11	Sheet No. 1 of 1
						DRAWING NUMBER 04-5307	



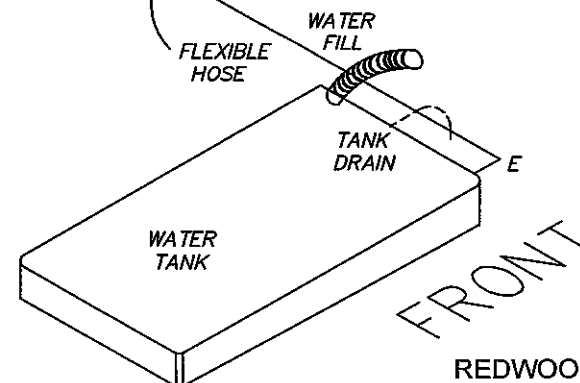
POTABLE TUBING INFO:
 FLEXPEX 1/2" (INSIDE DIAMETER) SDR9
 PEX-9 B137.5 POTABLE
 ASTM F876/F877/F2023
 160psi 73.4F/100psi 180F/80psi 200F
 TUBING

----- HOT WATER LINE
 _____ COLD WATER LINE

T - TEE
 E - ELBOW

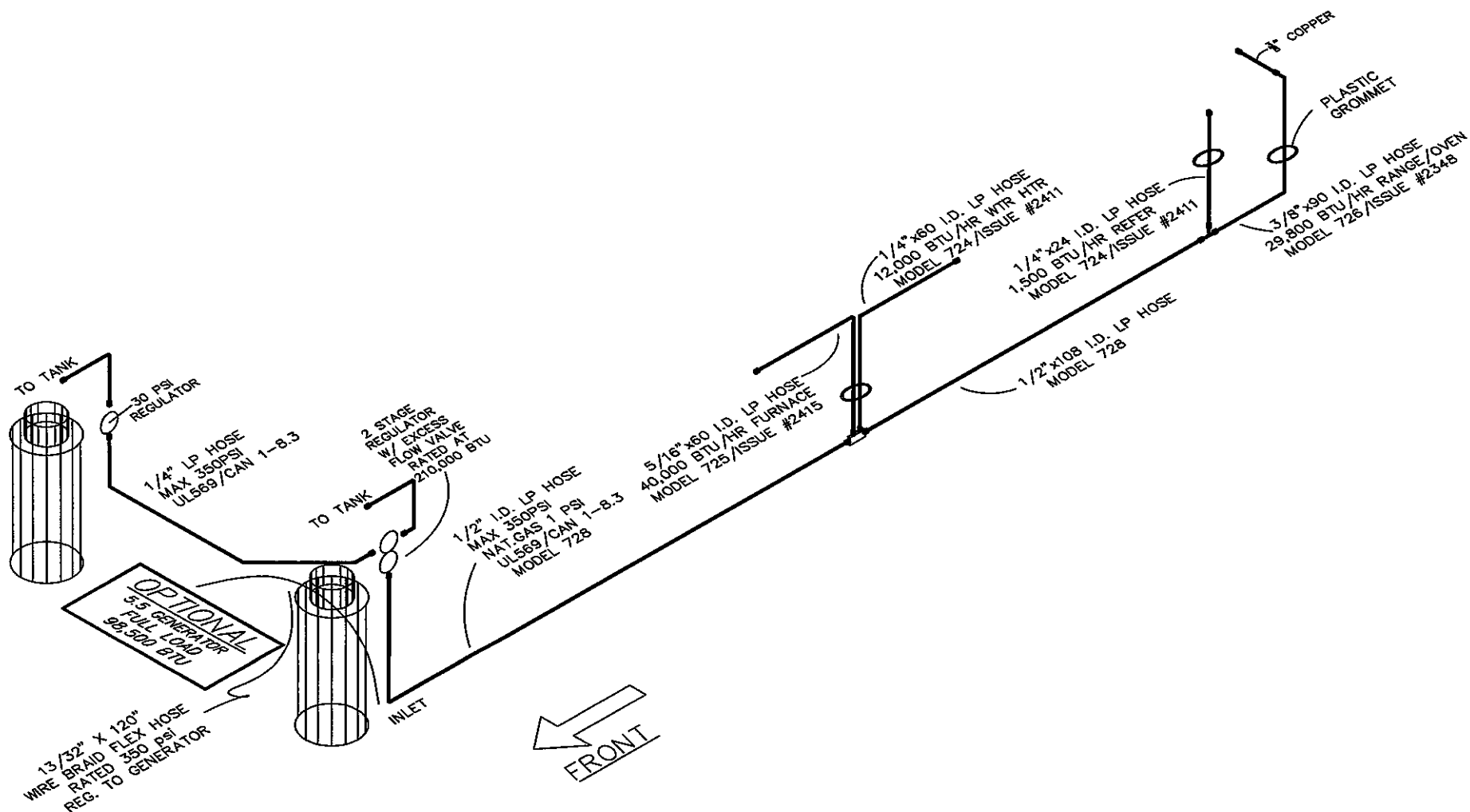
NOTE: ALL FIXTURE P-TRAPS ARE 1 1/4" WITH ADAPTER UNLESS OTHERWISE NOTED.
 LENGTH OF TRAP ARMS MEET THE REQUIREMENTS OF TABLE 7.4.5.4 (NFPA 1192-2011) AND CLAUSE 7.3 (TABLE 2) (CSA Z240 RV SERIES-2011)

CROSSROADS (REDWOOD RV)



REDWOOD FW - 36FL

Rev	Date:	Revisions	By	REDWOOD R.V. 72440 State Rd 13 SYRACUSE, IN 46567	
-	-	-	-	Title: WATER LINES	
				Drawn By: RFP	Scale: DNS
				Date: 09/26/11	Sheet No. 1 of 1
				DRAWING NUMBER 04-4307	



REDWOOD FR 36FL

NOTES:
TOTAL LOAD NOT TO EXCEED 171,800 BTU
MAX. DEVELOPED LENGTH UNDER 35'-0"
ORDER OF APPLIANCE ON SUPPLY LINE MAY
VARY DUE TO CUSTOMER PREFERENCE.
LP GAS REGULATOR PROTECTED PER NFPA 1192-2011
SIZE OF PIPING PER TESTING CERT. PREVIOUSLY APPROVED

Rev	Date:	Revisions	By	REDWOOD R.V. 72440 STATE ROAD 13 SYRACUSE, IN 46567	
-	-	-	-		
				Title: MARSHALL GAS MANIFOLD	
				Drawn By: RFP	Scale: DNS
				Date: 09/26/11	Sheet No. 1 OF 1
				DRAWING NUMBER 04-3307	