



PARTS LIST

REFRIGERATOR

7 CF 2-WAY

MODEL NUMBER

DMR702RB

PRODUCT NUMBER

936000769



REVISION C

Form No. 3315531.008 7/15
©2015 Dometic Corporation
LaGrange, IN 46761

USA

SERVICE OFFICE
Dometic Corporation
2320 Industrial Parkway
Elkhart, IN 46516

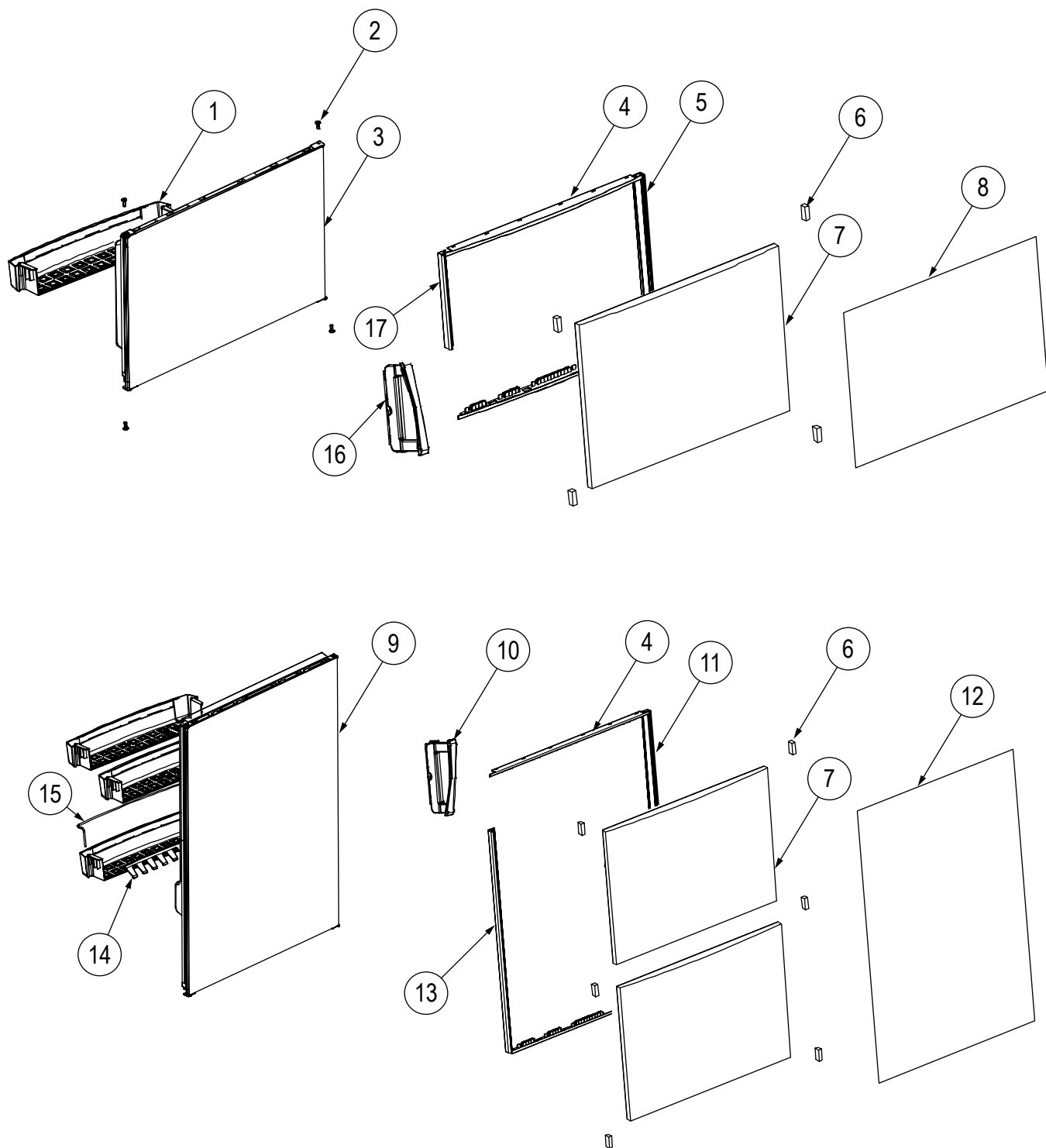
CANADA

Dometic Corporation
46 Zatonski, Unit 3
Brantford, ON N3T 5L8
CANADA

SERVICE CENTER & DEALER LOCATIONS

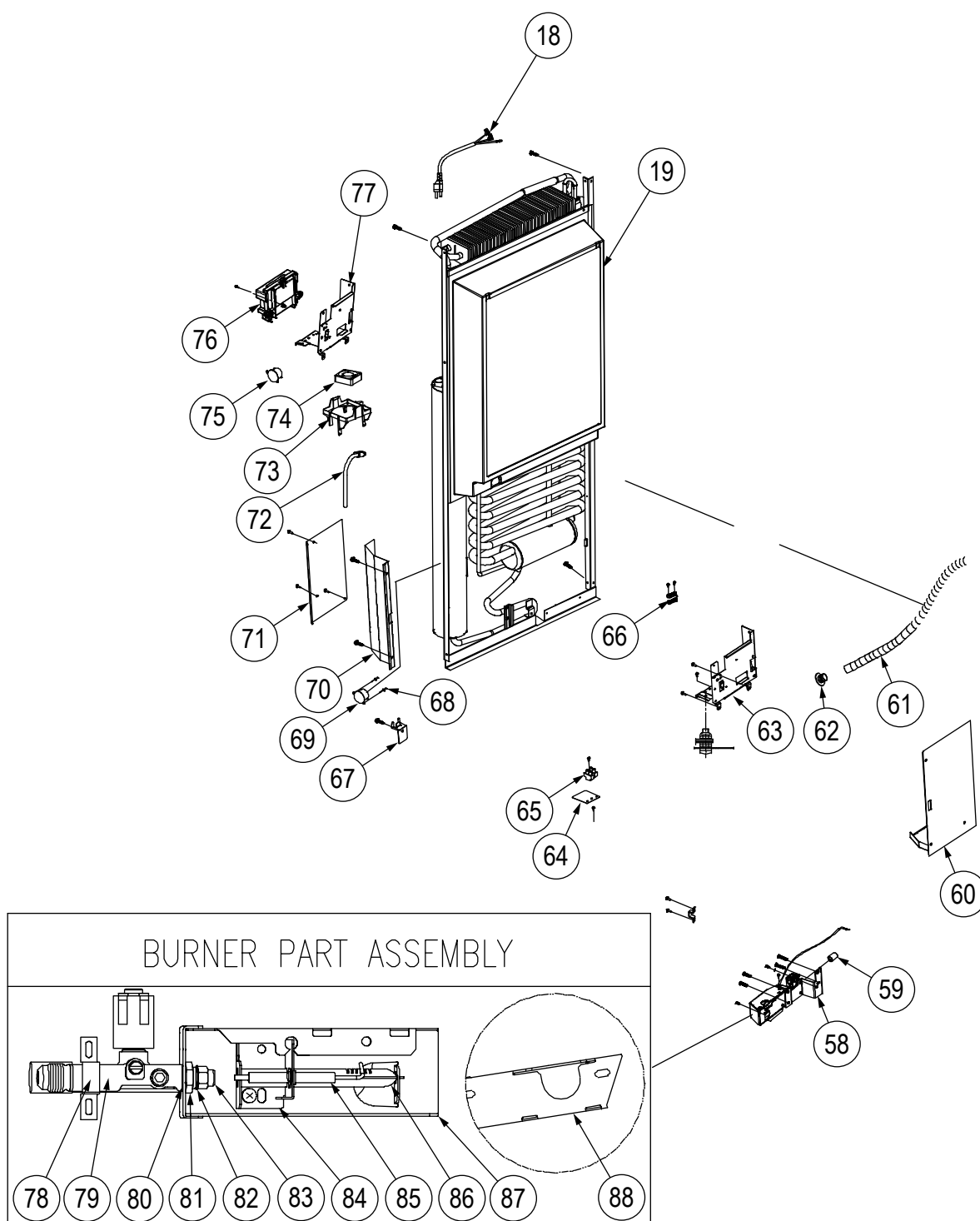
Please Visit:
www.eDometic.com

DOOR ASSEMBLY



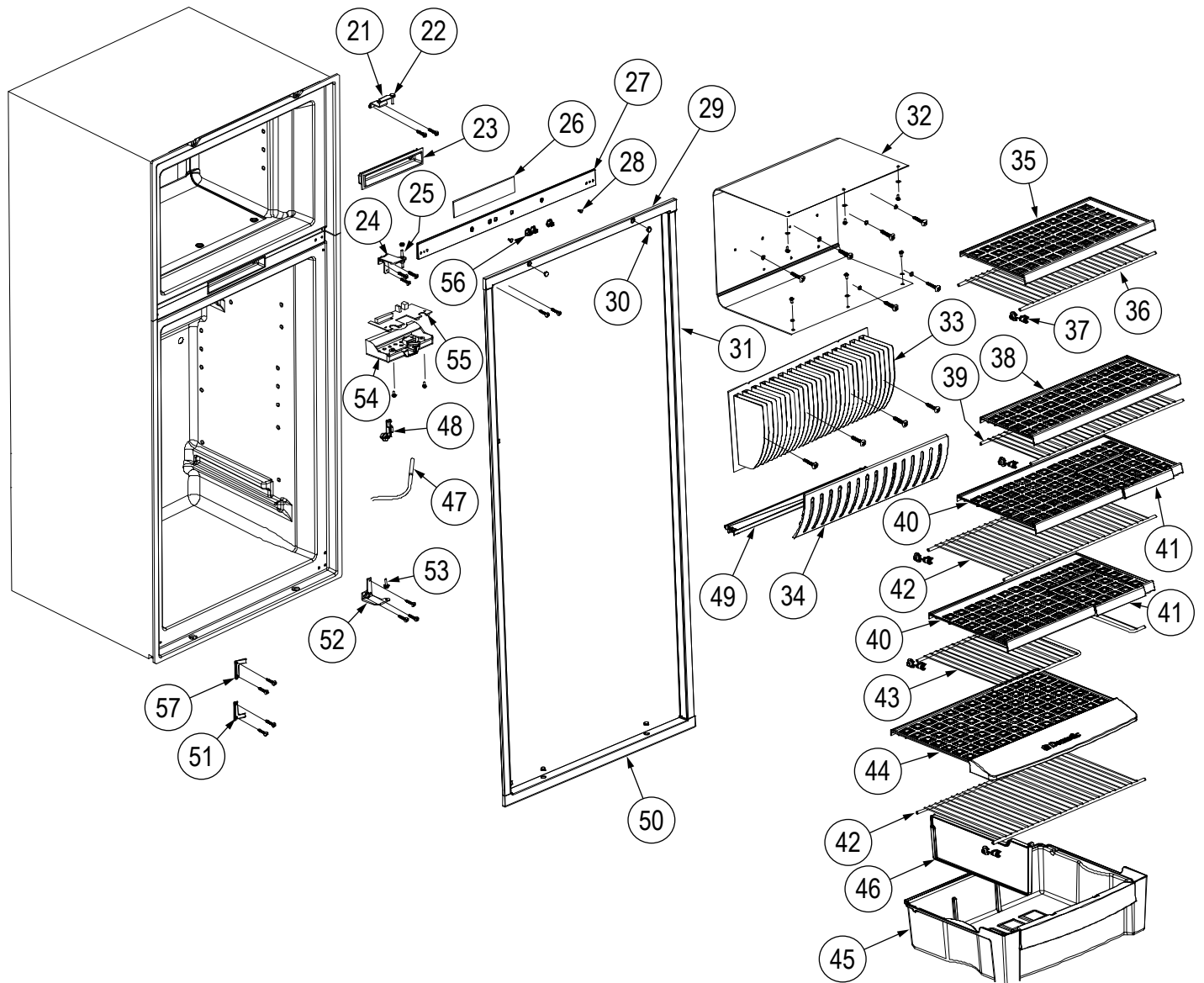
Only Those Parts Identified With An Index Number Are Available For Service Replacement

CONTROL & BURNER COMPONENTS



Only Those Parts Identified With An Index Number Are Available For Service Replacement

CABINET EXTERIOR / INTERIOR COMPONENTS



Only Those Parts Identified With An Index Number Are Available For Service Replacement

Index #	Part Number	Description
1	3851510010	SHELF, DR FRZ
2	2931171066	KIT, DR HINGE BUSHING 17MM
3	4450008362	SVC, DR ASM, FRZ
4	4450007732	DOOR DECORATION
5	4450002432	SIDE PROFILE, FZR, OUTER
6	4450002690	SPACER
7	4450002620	POLYFOAM
8	4450003422	DOOR PANEL
9	4450008363	DOOR FF ASM
10	4450007883	HANDLE, ASM., R FF / L FRZ
11	3851509046	SIDE PROFILE, OUTER
12	4450003423	DOOR PANEL
13	3851509020	SIDE PROFILE, FF ,OUTER
14	3851585013	BOTTLE HOLDER
15	3851518013	RAIL, DOOR FF
16	4450007884	HANDLE, ASM., R FRZ / L FF
17	3851509012	SVC, SIDE PROFILE, FZR, OUTER
18	2002699219	KIT, SVC CORD, AC POWER 1000MM
19	4450008360	SVC, COOLING UNIT
21	3851563019	SVC, HINGE, UPR
22	2932415017	SVC, HINGE PIN, UPR
23	3851522031	SVC, PCB HOUSING
24	3851564017	SVC, HINGE, MIDDLE
25	2932648021	KIT, SVC HINGE PIN, MIDDLE BLK
26	4450009109	DISPLAY PCB-A
27	4450007762	DISPLAY CARD HOLDER, SVC
28	4450005802	RIVET
29	3851520019	SVC, TOP DECORATION, DR, FF
30	4450007759	PLUG
31	3851516017	FRONT FRAME PROFILE
32	3851576011	FRZ COMPARTMENT
33	4450003411	FINNED PLATE
34	3851575013	PROTECTION FINNED PLATE
35	3851559017	PLASTIC SHELF FREEZER
36	3851569016	SHELF, WIRE
37	4450007748	SHELF RETAINER
38	3851558019	PLASTIC SHELF FRIDGE
39	3851569024	SHELF, WIRE
40	3851556013	SHELF, MILK PLASTIC
41	3851557011	LID, MILK SHELF
42	3851569032	SHELF, WIRE
43	3851555015	SHELF, WIRE
44	3851554018	SHELF CRISPER
45	3851511018	CRISPER
46	3851552012	DIVIDER

Index #	Part Number	Description
47	3851059034	KIT, THERMISTOR, 1045MM, V-1
48	4450007751	THERMISTOR HOLDER
49	3851553010	DRIP PROTECTION
50	3851519011	BOTTOM DECORATION
51	4450007753	TWIST PROTECTION
52	3851564025	LOWER HINGE
53	3850269014	HINGE PIN, LWR
54	3851574016	LIGHTING HOUSE
55	4450006252	LAMP PCB
56	4450007763	BUTTON SQUARE
57	4450007755	TWIST PROTECTION
58	3850377015	KIT, SVC GAS VALVE MNTG BRKT
59	2931126011	KIT, SVC COLLAR, PROTECTIVE
60	3851300016	KIT, SVC INNER/BTM HSG PLATE
61	2932749159	KIT, SVC DRAIN HOSE, 1375MM, BLK
62	2932115013	KIT, SVC PLUG, DRAINAGE
63	3851474019	KIT, ELECTRONIC COMPONENT BRKT
64	4450005050	INLET PLATE
65	3858022027	TERMINAL BLOCK
66	2932342013	RELIEF, STRAIN
67	3851396014	HOLDER, THERMAL FUSE
68	3858001070	RIVET
69	4450001841	THERMAL FUSE
70	3851301014	KIT, SVC SIDE HSG BRKT 349MM
71	3851302012	KIT, SVC BACK HSG BRKT 269.5MM
72	3850644612	KIT, SVC HEATER, 120V 325W
73	3851573018	HOLD FOR FAN
74	4450001818	FAN
75	4450001848	THERMAL FUSE
76	3851331011	KIT, SVC MODULE, POWER
77	3851474019	KIT, ELECTRONIC COMPONENT BRKT
78	2932662014	KIT BRKT, GAS VALVE, ANTI-ROTATE
79	2932615012	KIT, SVC SOLENOID VALVE 6-10CF
80	3858010071	KIT, SVC WASHER 12.5*18.5MM
81	4450003722	CU. NUT
82	2007457001	KIT, SVC WASHER, ALUM 8*12*.5MM
83	4450001960	RUBY JET
84	2930652041	SVC, PIPE HOLDER
85	2932781012	KIT, SVC ELECTRODE, 450MM, VER1
86	0955001672	KIT, SVC TUBE, BURNER, NDR1492
87	2932603018	SVC, BURNER HOUSING
88	2932661016	BURNER COVER