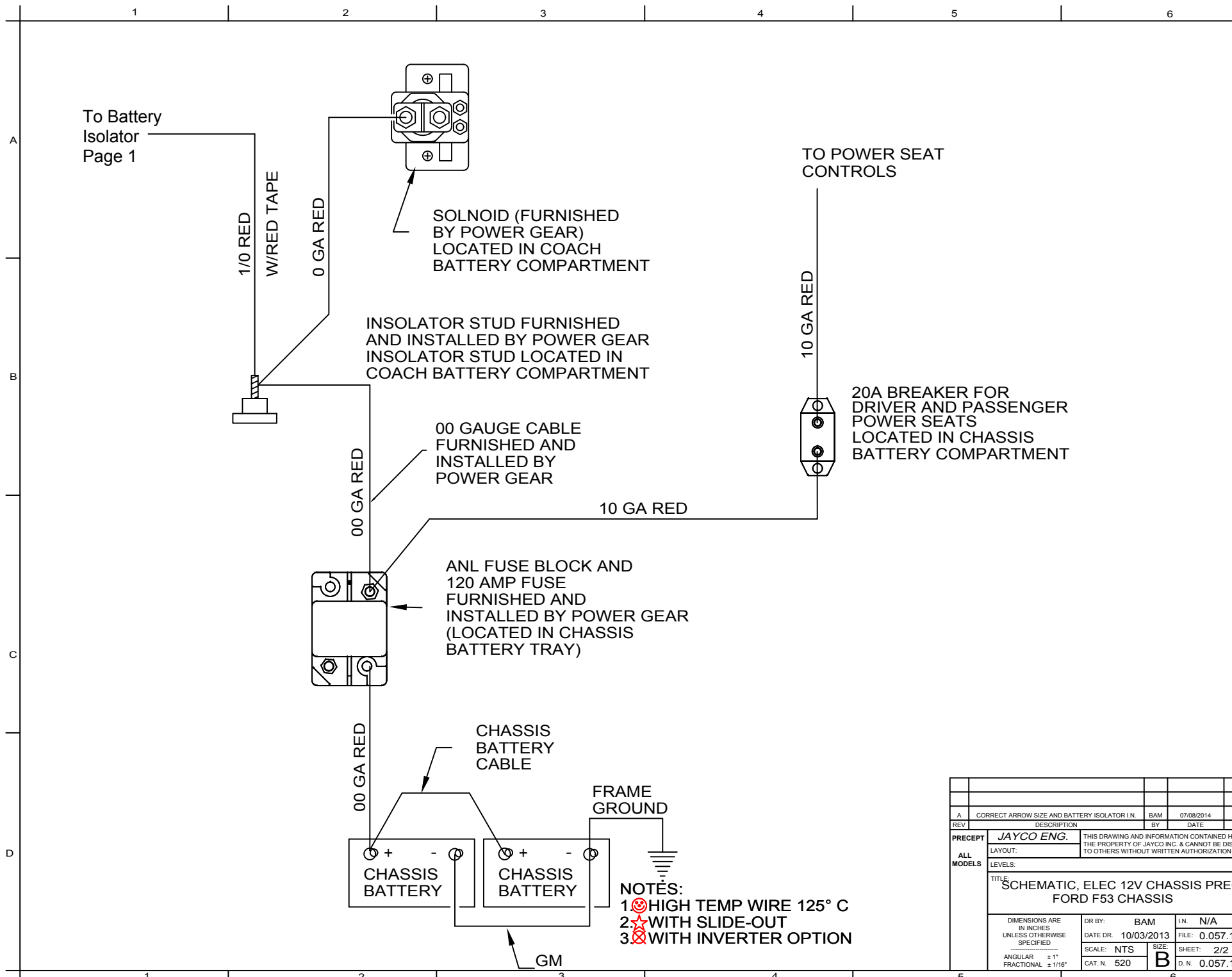


NOTES:
1. HIGH TEMP WIRE 125° C
2. WITH SLIDE-OUT
3. WITH INVERTER OPTION

A	CORRECT ARROW SIZE AND BATTERY ISOLATOR I.N.		BAM	07/08/2014	
REV	DESCRIPTION		BY	DATE	EC
PRECEPT	JAYCO ENG.		THIS DRAWING AND INFORMATION CONTAINED HEREIN IS THE PROPERTY OF JAYCO INC. & CANNOT BE DISCLOSED TO OTHERS WITHOUT WRITTEN AUTHORIZATION OF JAYCO INC.		
ALL MODELS	LAYOUT:				
	LEVELS:				
	TITLE: SCHEMATIC, ELEC 12V CHASSIS PRECEPT FORD F53 CHASSIS				
DIMENSIONS ARE IN INCHES UNLESS OTHERWISE SPECIFIED		DR BY: BAM	I.N. N/A		
		DATE DR. 10/03/2013	FILE: 0.057.166		
ANGULAR ± 1° FRACTIONAL ± 1/16"		SCALE: NTS	SIZE: B	SHEET: 1/2	
		CAT. N. 520	D.N. 0.057.166		



A	CORRECT ARROW SIZE AND BATTERY ISOLATOR I.N.			BAM	07/08/2014
REV	DESCRIPTION			BY	DATE
PRECEPT ALL MODELS	JAYCO ENG.		THIS DRAWING AND INFORMATION CONTAINED HERE		
	LAYOUT:		THE PROPERTY OF JAYCO INC. & CANNOT BE DISC		
	LEVELS:		TO OTHERS WITHOUT WRITTEN AUTHORIZATION OF		
TITLE					
SCHEMATIC, ELEC 12V CHASSIS PREC					
FORD F53 CHASSIS					
DIMENSIONS ARE IN INCHES UNLESS OTHERWISE SPECIFIED		DR BY:	BAM	I.N.	N/A
		DATE DR:	10/03/2013	FILE:	0.057.1
ANGULAR ± 1° FRACTIONAL ± 1/16"		SCALE:	NTS	SIZE:	SHEET: 2/2
		CAT. N.	520	D. N.	0.057.1